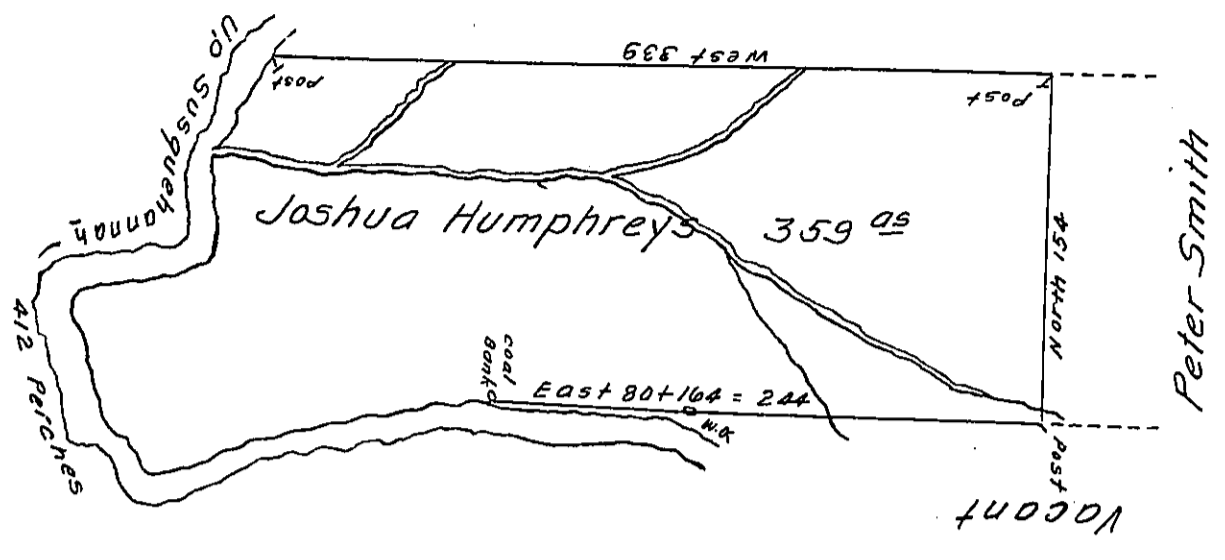


Samuel Richards's Land

Courses & Distances up the River.

- 1. S. 44 W 23
 - 2. S. 4 W 33
 - 3. S. 29 W 28
 - 4. S. 14 E 26
 - 5. S. 73 W 63
 - 6. S. 25 E 14
 - 7. S. 14 E 44
 - 8. S. 72 E 10
 - 9. S. 29 E 20
 - 10. N. 66 E 60
 - 11. N. 80 E 91
- 412-



A Draught of a Tract of Land called the Stock Farms. situate on the Southerly side of the West Branch of Susquehanna - including the forks of a Run which Empties into the said Branch about seven miles below the Canoe Place Including a Coal Bank adjoining Land of Samuel Richards & Peter Smith in the County of Bedford. Containing three hundred & fifty nine Acres & the usual Allowance of six & Cent for Roads &c. Surveyed the 15th Day of November 1775. for Joshua Humphreys in pursuance of a Warrant Dated the third Day of August 1773. by

To John Lukens Esq^r }
 Surveyor General. }

Thomas Smith D.S.

N.B. The above Tract contains 29 Acres more than the Allowance which was taken in to make up the deficiency in Rebecca Browns & Jeremiah Williamson's Surveys within the same Tract & belonging to the same owners.

IN TESTIMONY that the above is a copy of the original remaining on file in the Department of Internal Affairs of Pennsylvania, made conformably to an Act of Assembly approved the 16th day of February, 1833, I have hereunto set my Hand and caused the Seal of said Department to be affixed at Harrisburg, this ninth day of March 1911.

Henry Houch
 Secretary of Internal Affairs.